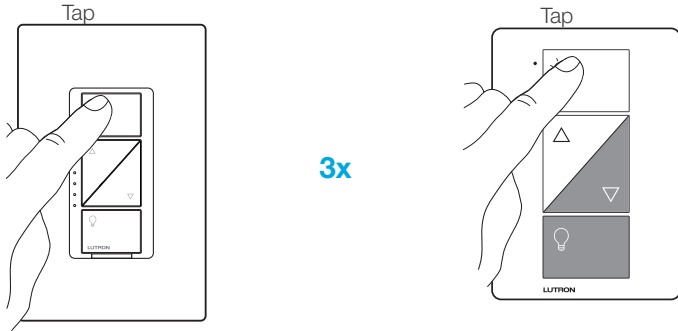
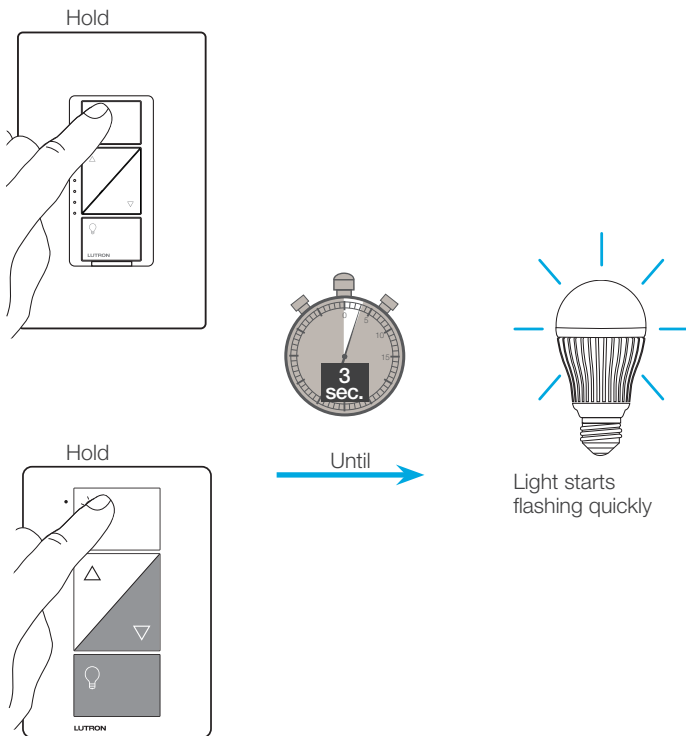


Removing Paired Devices from a Caséta™ Wireless Dimmer

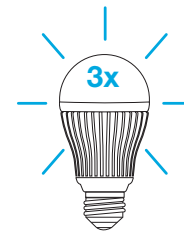
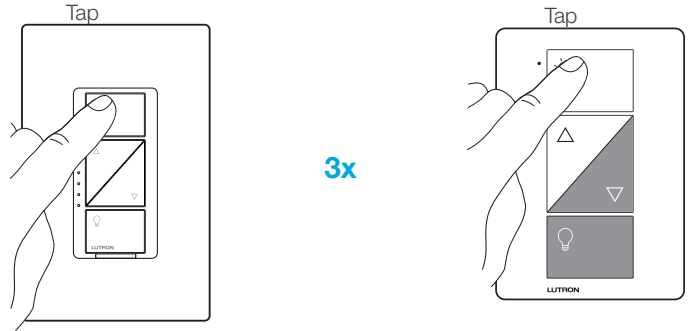
1 Tap the "On" button quickly three times, holding on the last press



2 Continue to hold the "On" button until the light begins to flash quickly.



3 Release the button, then immediately tap the button three more times



Light will flash slowly three times, then turn off

4 All paired remotes are removed and all settings are returned to factory default.

– After the dimmer resets, the light will turn on to the full on state.

Note: This procedure also resets the high-end and low-end trim settings.